

Saved Wednesday, May 02, 2012 3:39:51 PM AROLINS Plotted Wednesday, May 02, 2012 3:54:55 PM Rollins, Andrew

| Legend | | | | | |
|--------|-------|------------------------------------|------------|------------|--------------------------------|
| Exist. | Prop. | | Exist. | Prop. | |
| | | PROPERTY LINE | | | CONCRETE |
| | | PROJECT LIMIT LINE | | | HEAVY DUTY PAVEMENT |
| | | RIGHT-OF-WAY/PROPERTY LINE | | | RIPRAP |
| | | EASEMENT | | | CONSTRUCTION ENTRANCE |
| | | BUILDING SETBACK | 27.35 TC x | 27.35 TC x | TOP OF CURB ELEVATION |
| | | PARKING SETBACK | 26.85 BC x | 26.85 BC x | BOTTOM OF CURB ELEVATION |
| | | BASELINE | 132.75 x | 132.75 x | SPOT ELEVATION |
| | | CONSTRUCTION LAYOUT | 45.0 TW x | 45.0 TW x | TOP & BOTTOM OF WALL ELEVATION |
| | | ZONING LINE | 38.5 BW | 38.5 BW | BORING LOCATION |
| | | TOWN LINE | | | TEST PIT LOCATION |
| | | | | | MONITORING WELL |
| | | LIMIT OF DISTURBANCE | | | UNDERDRAIN |
| | | WETLAND LINE WITH FLAG | | | DRAIN |
| | | FLOODPLAIN | | | ROOF DRAIN |
| | | BORDERING LAND SUBJECT TO FLOODING | | | SEWER |
| | | WETLAND BUFFER ZONE | | | FORCE MAIN |
| | | NO DISTURB ZONE | | | OVERHEAD WIRE |
| | | 200' RIVERFRONT AREA | | | WATER |
| | | | | | FIRE PROTECTION |
| | | GRAVEL ROAD | | | DOMESTIC WATER |
| | | EDGE OF PAVEMENT | | | GAS |
| | | BITUMINOUS BERM | | | ELECTRIC |
| | | BITUMINOUS CURB | | | STEAM |
| | | CONCRETE CURB | | | TELEPHONE |
| | | CURB AND GUTTER | | | FIRE ALARM |
| | | EXTRUDED CONCRETE CURB | | | CABLE TV |
| | | MONOLITHIC CONCRETE CURB | | | CATCH BASIN |
| | | PRECAST CONC. CURB | | | DOUBLE CATCH BASIN |
| | | SLOPED GRAN. EDGING | | | GUTTER INLET |
| | | VERT. GRAN. CURB | | | DRAIN MANHOLE |
| | | LIMIT OF CURB TYPE | | | TRENCH DRAIN |
| | | SAWCUT | | | PLUG OR CAP |
| | | | | | CLEANOUT |
| | | | | | FLARED END SECTION |
| | | | | | HEADWALL |
| | | | | | SEWER MANHOLE |
| | | | | | CURB STOP & BOX |
| | | | | | WATER VALVE & BOX |
| | | | | | TAPPING SLEEVE, VALVE & BOX |
| | | | | | SIAMESE CONNECTION |
| | | | | | FIRE HYDRANT |
| | | | | | WATER METER |
| | | | | | POST INDICATOR VALVE |
| | | | | | WATER WELL |
| | | | | | GAS GATE |
| | | | | | GAS METER |
| | | | | | ELECTRIC MANHOLE |
| | | | | | ELECTRIC METER |
| | | | | | LIGHT POLE |
| | | | | | TELEPHONE MANHOLE |
| | | | | | TRANSFORMER PAD |
| | | | | | UTILITY POLE |
| | | | | | GUY POLE |
| | | | | | GUY WIRE & ANCHOR |
| | | | | | HAND HOLE |
| | | | | | PULL BOX |
| | | | | | MATCHLINE |
| | | | | | MATCHLINE |
| | | | | | CROSSWALK |
| | | | | | ACCESSIBLE CURB RAMP |
| | | | | | ACCESSIBLE PARKING |
| | | | | | VAN-ACCESSIBLE PARKING |

| Abbreviations | |
|---------------|--------------------------------|
| General | |
| ABAN | ABANDON |
| ACR | ACCESSIBLE CURB RAMP |
| ADJ | ADJUST |
| APPROX | APPROXIMATE |
| BIT | BITUMINOUS |
| BS | BOTTOM OF SLOPE |
| BWLL | BROKEN WHITE LANE LINE |
| CONC | CONCRETE |
| DYCL | DOUBLE YELLOW CENTER LINE |
| EL | ELEVATION |
| ELEV | ELEVATION |
| EXIST | EXISTING |
| FDN | FOUNDATION |
| FFE | FIRST FLOOR ELEVATION |
| GRAN | GRANITE |
| GTD | GRADE TO DRAIN |
| LA | LANDSCAPE AREA |
| LOD | LIMIT OF DISTURBANCE |
| MAX | MAXIMUM |
| MIN | MINIMUM |
| NIC | NOT IN CONTRACT |
| NTS | NOT TO SCALE |
| PERF | PERFORATED |
| PROP | PROPOSED |
| REM | REMOVE |
| RET | RETAIN |
| R&D | REMOVE AND DISPOSE |
| R&R | REMOVE AND RESET |
| SWEL | SOLID WHITE EDGE LINE |
| SWLL | SOLID WHITE LANE LINE |
| TS | TOP OF SLOPE |
| TYP | TYPICAL |
| Utility | |
| CB | CATCH BASIN |
| OMP | CORRUGATED METAL PIPE |
| CO | CLEANOUT |
| DCB | DOUBLE CATCH BASIN |
| DMH | DRAIN MANHOLE |
| CIP | CAST IRON PIPE |
| COND | CONDUIT |
| DIP | DUCTILE IRON PIPE |
| FES | FLARED END SECTION |
| FM | FORCE MAIN |
| F&G | FRAME AND GRATE |
| F&C | FRAME AND COVER |
| GI | GUTTER INLET |
| GT | GREASE TRAP |
| HDPE | HIGH DENSITY POLYETHYLENE PIPE |
| HH | HANDHOLE |
| HW | HEADWALL |
| HYD | HYDRANT |
| INV | INVERT ELEVATION |
| I= | INVERT ELEVATION |
| LP | LIGHT POLE |
| MES | METAL END SECTION |
| PWW | PAVED WATER WAY |
| PVC | POLYVINYLCHLORIDE PIPE |
| RCP | REINFORCED CONCRETE PIPE |
| R= | RIM ELEVATION |
| SMH | SEWER MANHOLE |
| TSV | TAPPING SLEEVE, VALVE AND BOX |
| UG | UNDERGROUND |
| UP | UTILITY POLE |

| Notes: | |
|-----------|--|
| General | |
| 1. | CONTRACTOR SHALL NOTIFY "DIG-SAFE" (1-888-344-7233) AT LEAST 72 HOURS BEFORE EXCAVATING. |
| 2. | CONTRACTOR SHALL BE RESPONSIBLE FOR SITE SECURITY AND JOB SAFETY. CONSTRUCTION ACTIVITIES SHALL BE IN ACCORDANCE WITH OSHA STANDARDS AND LOCAL REQUIREMENTS. |
| 3. | ACCESSIBLE ROUTES, PARKING SPACES, RAMPS, SIDEWALKS AND WALKWAYS SHALL BE CONSTRUCTED IN CONFORMANCE WITH THE FEDERAL AMERICANS WITH DISABILITIES ACT AND WITH STATE AND LOCAL LAWS AND REGULATIONS (WHICHEVER ARE MORE STRINGENT). |
| 4. | AREAS DISTURBED DURING CONSTRUCTION AND NOT RESTORED WITH IMPERVIOUS SURFACES (BUILDINGS, PAVEMENTS, WALKS, ETC.) SHALL RECEIVE 6 INCHES LOAM AND SEED. |
| 5. | WITHIN THE LIMITS OF THE BUILDING FOOTPRINT, THE SITE CONTRACTOR SHALL PERFORM EARTHWORK OPERATIONS REQUIRED UP TO SUBGRADE ELEVATIONS. |
| 6. | WORK WITHIN THE LOCAL RIGHTS-OF-WAY SHALL CONFORM TO LOCAL MUNICIPAL STANDARDS. WORK WITHIN STATE RIGHTS-OF-WAY SHALL CONFORM TO THE LATEST EDITION OF THE STATE HIGHWAY DEPARTMENTS STANDARD SPECIFICATIONS FOR HIGHWAYS AND BRIDGES. |
| 7. | UPON AWARD OF CONTRACT, CONTRACTOR SHALL MAKE NECESSARY CONSTRUCTION NOTIFICATIONS AND APPLY FOR AND OBTAIN NECESSARY PERMITS, PAY FEES, AND POST BONDS ASSOCIATED WITH THE WORK INDICATED ON THE DRAWINGS, IN THE SPECIFICATIONS, AND IN THE CONTRACT DOCUMENTS. DO NOT CLOSE OR OBSTRUCT ROADWAYS, SIDEWALKS, AND FIRE HYDRANTS, WITHOUT APPROPRIATE PERMITS. |
| 8. | TRAFFIC SIGNAGE AND PAVEMENT MARKINGS SHALL CONFORM TO THE MANUAL OF UNIFORM TRAFFIC CONTROL DEVICES. |
| 9. | AREAS OUTSIDE THE LIMITS OF PROPOSED WORK DISTURBED BY THE CONTRACTOR'S OPERATIONS SHALL BE RESTORED BY THE CONTRACTOR TO THEIR ORIGINAL CONDITION AT THE CONTRACTOR'S EXPENSE. |
| 10. | IN THE EVENT THAT SUSPECTED CONTAMINATED SOIL, GROUNDWATER, AND OTHER MEDIA ARE ENCOUNTERED DURING EXCAVATION AND CONSTRUCTION ACTIVITIES BASED ON VISUAL, OLFACTORY, OR OTHER EVIDENCE, THE CONTRACTOR SHALL STOP WORK IN THE VICINITY OF THE SUSPECT MATERIAL TO AVOID FURTHER SPREADING OF THE MATERIAL, AND SHALL NOTIFY THE OWNER IMMEDIATELY SO THAT THE APPROPRIATE TESTING AND SUBSEQUENT ACTION CAN BE TAKEN. |
| 11. | CONTRACTOR SHALL PREVENT DUST, SEDIMENT, AND DEBRIS FROM EXITING THE SITE AND SHALL BE RESPONSIBLE FOR CLEANUP, REPAIRS AND CORRECTIVE ACTION IF SUCH OCCURS. |
| 12. | DAMAGE RESULTING FROM CONSTRUCTION LOADS SHALL BE REPAIRED BY THE CONTRACTOR AT NO ADDITIONAL COST TO OWNER. |
| 13. | CONTRACTOR SHALL CONTROL STORMWATER RUNOFF DURING CONSTRUCTION TO PREVENT ADVERSE IMPACTS TO OFF SITE AREAS, AND SHALL BE RESPONSIBLE TO REPAIR RESULTING DAMAGES, IF ANY, AT NO COST TO OWNER. |
| 14. | THIS PROJECT DISTURBS MORE THAN ONE ACRE OF LAND AND FALLS WITHIN THE NPDES CONSTRUCTION GENERAL PERMIT (CGP) PROGRAM AND EPA JURISDICTION. PRIOR TO THE START OF CONSTRUCTION CONTRACTOR IS TO FILE A CGP NOTICE OF INTENT WITH THE EPA AND PREPARE A STORMWATER POLLUTION PREVENTION PLAN IN ACCORDANCE WITH THE NPDES REGULATIONS. CONTRACTOR SHALL CONFIRM THE OWNER HAS ALSO FILED A NOTICE OF INTENT WITH THE EPA. |
| Utilities | |
| 1. | THE LOCATIONS, SIZES, AND TYPES OF EXISTING UTILITIES ARE SHOWN AS AN APPROXIMATE REPRESENTATION ONLY. THE OWNER OR ITS REPRESENTATIVE(S) HAVE NOT INDEPENDENTLY VERIFIED THIS INFORMATION AS SHOWN ON THE PLANS. THE UTILITY INFORMATION SHOWN DOES NOT GUARANTEE THE ACTUAL EXISTENCE, SERVICEABILITY, OR OTHER DATA CONCERNING THE UTILITIES, NOR DOES IT GUARANTEE AGAINST THE POSSIBILITY THAT ADDITIONAL UTILITIES MAY BE PRESENT THAT ARE NOT SHOWN ON THE PLANS. PRIOR TO ORDERING MATERIALS AND BEGINNING CONSTRUCTION, THE CONTRACTOR SHALL VERIFY AND DETERMINE THE EXACT LOCATIONS, SIZES, AND ELEVATIONS OF THE POINTS OF CONNECTIONS TO EXISTING UTILITIES AND, SHALL CONFIRM THAT THERE ARE NO INTERFERENCES WITH EXISTING UTILITIES AND THE PROPOSED UTILITY ROUTES, INCLUDING ROUTES WITHIN THE PUBLIC RIGHTS OF WAY. |
| 2. | WHERE AN EXISTING UTILITY IS FOUND TO CONFLICT WITH THE PROPOSED WORK, OR EXISTING CONDITIONS DIFFER FROM THOSE SHOWN SUCH THAT THE WORK CANNOT BE COMPLETED AS INTENDED, THE LOCATION, ELEVATION, AND SIZE OF THE UTILITY SHALL BE ACCURATELY DETERMINED WITHOUT DELAY BY THE CONTRACTOR, AND THE INFORMATION FURNISHED IN WRITING TO THE OWNER'S REPRESENTATIVE FOR THE RESOLUTION OF THE CONFLICT AND CONTRACTOR'S FAILURE TO NOTIFY PRIOR TO PERFORMING ADDITIONAL WORK RELEASES OWNER FROM OBLIGATIONS FOR ADDITIONAL PAYMENTS WHICH OTHERWISE MAY BE WARRANTED TO RESOLVE THE CONFLICT. |
| 3. | SET CATCH BASIN RIMS, AND INVERTS OF SEWERS, DRAINS, AND DITCHES IN ACCORDANCE WITH ELEVATIONS ON THE GRADING AND UTILITY PLANS. |
| 4. | RIM ELEVATIONS FOR DRAIN AND SEWER MANHOLES, WATER VALVE COVERS, GAS GATES, ELECTRIC AND TELEPHONE PULL BOXES, AND MANHOLES, AND OTHER SUCH ITEMS, ARE APPROXIMATE AND SHALL BE SET/RESET AS FOLLOWS: A. PAVEMENTS AND CONCRETE SURFACES: FLUSH B. ALL SURFACES ALONG ACCESSIBLE ROUTES: FLUSH C. LANDSCAPE, LOAM AND SEED, AND OTHER EARTH SURFACE AREAS: ONE INCH ABOVE SURROUNDING AREA AND TAPER EARTH TO THE RIM ELEVATION. |
| 5. | THE LOCATION, SIZE, DEPTH, AND SPECIFICATIONS FOR CONSTRUCTION OF PROPOSED PRIVATE UTILITY SERVICES SHALL BE INSTALLED ACCORDING TO THE REQUIREMENTS PROVIDED BY, AND APPROVED BY, THE RESPECTIVE UTILITY COMPANY (GAS, TELEPHONE, ELECTRIC, FIRE ALARM, ETC.). FINAL DESIGN LOADS AND LOCATIONS TO BE COORDINATED WITH OWNER AND ARCHITECT. |
| 6. | CONTRACTOR SHALL MAKE ARRANGEMENTS FOR AND SHALL BE RESPONSIBLE FOR PAYING FEES FOR POLE RELOCATION AND FOR THE ALTERATION AND ADJUSTMENT OF GAS, ELECTRIC, TELEPHONE, FIRE ALARM, AND ANY OTHER PRIVATE UTILITIES, WHETHER WORK IS PERFORMED BY CONTRACTOR OR BY THE UTILITIES COMPANY. |
| 7. | UTILITY PIPE MATERIALS SHALL BE AS FOLLOWS, UNLESS OTHERWISE NOTED ON THE PLAN: A. WATER PIPES SHALL BE DUCTILE IRON PIPE. B. SANITARY SEWER PIPES SHALL BE POLYVNYL CHLORIDE (PVC) 35, SEWER PIPE C. STORM DRAINAGE PIPES SHALL BE HDPE. D. PIPE INSTALLATION AND MATERIALS SHALL COMPLY WITH THE STATE PLUMBING CODE WHERE APPLICABLE. CONTRACTOR SHALL COORDINATE WITH LOCAL PLUMBING INSPECTOR PRIOR TO BEGINNING WORK. |
| 8. | CONTRACTOR SHALL COORDINATE WITH ELECTRICAL CONTRACTOR AND SHALL FURNISH EXCAVATION, INSTALLATION, AND BACKFILL OF ELECTRICAL FURNISHED SITEMORK RELATED ITEMS SUCH AS PULL BOXES, CONDUITS, DUCT BANKS, LIGHT POLE BASES, AND CONCRETE PADS. SITE CONTRACTOR SHALL FURNISH CONCRETE ENCASMENT OF DUCT BANKS IF REQUIRED BY THE UTILITY COMPANY AND AS INDICATED ON THE DRAWINGS. |
| 9. | CONTRACTOR SHALL EXCAVATE AND BACKFILL TRENCHES FOR GAS IN ACCORDANCE WITH GAS COMPANY'S REQUIREMENTS. |
| 10. | ALL DRAINAGE AND SANITARY STRUCTURE INTERIOR DIAMETERS (4" MIN.) SHALL BE DETERMINED BY THE MANUFACTURER BASED ON THE PIPE CONFIGURATIONS SHOWN ON THESE PLANS AND LOCAL MUNICIPAL STANDARDS. FOR MANHOLES THAT ARE 20 FEET IN DEPTH AND GREATER, THE MINIMUM DIAMETER SHALL BE 5 FEET. |

| | |
|----------------------|--|
| Layout and Materials | |
| 1. | DIMENSIONS ARE FROM THE FACE OF CURB, FACE OF BUILDING, FACE OF WALL, AND CENTER LINE OF PAVEMENT MARKINGS, UNLESS OTHERWISE NOTED. |
| 2. | CURB RADII ARE 4 FEET UNLESS OTHERWISE NOTED. |
| 3. | CURBING SHALL BE PCC WITHIN THE SITE UNLESS OTHERWISE INDICATED ON THE PLANS. |
| 4. | SEE ARCHITECTURAL DRAWINGS FOR EXACT BUILDING DIMENSIONS AND DETAILS CONTIGUOUS TO THE BUILDING, INCLUDING SIDEWALKS, RAMPS, BUILDING ENTRANCES, STAIRWAYS, UTILITY PENETRATIONS, CONCRETE DOOR PADS, COMPACTOR PAD, LOADING DOCKS, BOLLARDS, ETC. |
| 5. | PROPOSED BOUNDS AND ANY EXISTING PROPERTY LINE MONUMENTATION DISTURBED DURING CONSTRUCTION SHALL BE SET OR RESET BY A PROFESSIONAL LICENSED SURVEYOR. |
| 6. | PRIOR TO START OF CONSTRUCTION, CONTRACTOR SHALL VERIFY EXISTING PAVEMENT ELEVATIONS AT INTERFACE WITH PROPOSED PAVEMENTS, AND EXISTING GROUND ELEVATIONS ADJACENT TO DRAINAGE OUTLETS TO ASSURE PROPER TRANSITIONS BETWEEN EXISTING AND PROPOSED FACILITIES. |
| 7. | SYMBOLS AND LEGENDS OF PROJECT FEATURES ARE GRAPHIC REPRESENTATIONS AND ARE NOT NECESSARILY SCALED TO THEIR ACTUAL DIMENSIONS OR LOCATIONS ON THE DRAWINGS. THE CONTRACTOR SHALL REFER TO THE DETAIL SHEET DIMENSIONS, MANUFACTURERS' LITERATURE, SHOP DRAWINGS AND FIELD MEASUREMENTS OF SUPPLIED PRODUCTS FOR LAYOUT OF THE PROEJECT FEATURES. |
| 8. | CONTRACTOR SHALL NOT RELY SOLELY ON ELECTRONIC VERSIONS OF PLANS, SPECIFICATIONS, AND DATA FILES THAT ARE OBTAINED FROM THE DESIGNERS, BUT SHALL VERIFY LOCATION OF PROJECT FEATURES IN ACCORDANCE WITH THE PAPER COPIES OF THE PLANS AND SPECIFICATIONS THAT ARE SUPPLIED AS PART OF THE CONTRACT DOCUMENTS. |

| | |
|-----------------|--|
| Demolition | |
| 1. | CONTRACTOR SHALL REMOVE AND DISPOSE OF EXISTING MANMADE SURFACE FEATURES WITHIN THE LIMIT OF WORK INCLUDING BUILDINGS, STRUCTURES, PAVEMENTS, SLABS, CURBING, FENCES, UTILITY POLES, SIGNS, ETC. UNLESS INDICATED OTHERWISE ON THE DRAWINGS. REMOVE AND DISPOSE OF EXISTING UTILITIES, FOUNDATIONS AND UNSUITABLE MATERIAL BENEATH AND FOR A DISTANCE OF 10 FEET BEYOND THE PROPOSED BUILDING FOOTPRINT INCLUDING EXTERIOR COLUMNS. |
| 2. | EXISTING UTILITIES SHALL BE TERMINATED, UNLESS OTHERWISE NOTED, IN CONFORMANCE WITH LOCAL, STATE AND INDIVIDUAL UTILITY COMPANY STANDARD SPECIFICATIONS AND DETAILS. THE CONTRACTOR SHALL COORDINATE UTILITY SERVICE DISCONNECTS WITH THE UTILITY REPRESENTATIVES. |
| 3. | CONTRACTOR SHALL DISPOSE OF DEMOLITION DEBRIS IN ACCORDANCE WITH APPLICABLE FEDERAL, STATE AND LOCAL REGULATIONS, ORDINANCES AND STATUTES. |
| 4. | THE DEMOLITION LIMITS DEPICTED IN THE PLANS IS INTENDED TO AID THE CONTRACTOR DURING THE BIDDING AND CONSTRUCTION PROCESS AND IS NOT INTENDED TO DEPICT EACH AND EVERY ELEMENT OF DEMOLITION. THE CONTRACTOR IS RESPONSIBLE FOR IDENTIFYING THE DETAILED SCOPE OF DEMOLITION BEFORE SUBMITTING ITS BID/PROPOSAL TO PERFORM THE WORK AND SHALL MAKE NO CLAIMS AND SEEK NO ADDITIONAL COMPENSATION FOR CHANGED CONDITIONS OR UNFORESEEN OR LATENT SITE CONDITIONS RELATED TO ANY CONDITIONS DISCOVERED DURING EXECUTION OF THE WORK. |
| 5. | UNLESS OTHERWISE SPECIFICALLY PROVIDED ON THE PLANS OR IN THE SPECIFICATIONS, THE ENGINEER HAS NOT PREPARED DESIGNS FOR AND SHALL HAVE NO RESPONSIBILITY FOR THE PRESENCE, DISCOVERY, REMOVAL, ABATEMENT OR DISPOSAL OF HAZARDOUS MATERIALS, TOXIC WASTES OR POLLUTANTS AT THE PROJECT SITE. THE ENGINEER SHALL NOT BE RESPONSIBLE FOR ANY CLAIMS OF LOSS, DAMAGE, EXPENSE, DELAY, INJURY OR DEATH ARISING FROM THE PRESENCE OF HAZARDOUS MATERIAL AND CONTRACTOR SHALL INDEMNIFY AND HOLD HARMLESS THE ENGINEER FROM ANY CLAIMS MADE IN CONNECTION THEREWITH. MOREOVER, THE ENGINEER SHALL HAVE NO ADMINISTRATIVE OBLIGATIONS OF ANY TYPE WITH REGARD TO ANY CONTRACTOR AMENDMENT INVOLVING THE ISSUES OF PRESENCE, DISCOVERY, REMOVAL, ABATEMENT OR DISPOSAL OF ASBESTOS OR OTHER HAZARDOUS MATERIALS. |
| Erosion Control | |
| 5. | PRIOR TO STARTING ANY OTHER WORK ON THE SITE, THE CONTRACTOR SHALL NOTIFY APPROPRIATE AGENCIES AND SHALL INSTALL EROSION CONTROL MEASURES AS SHOWN ON THE PLANS AND AS IDENTIFIED IN FEDERAL, STATE, AND LOCAL APPROVAL DOCUMENTS PERTAINING TO THIS PROJECT. |
| 6. | CONTRACTOR SHALL INSPECT AND MAINTAIN EROSION CONTROL MEASURES, AND REMOVE SEDIMENT THEREFROM ON A WEEKLY BASIS AND WITHIN TWELVE HOURS AFTER EACH STORM EVENT AND DISPOSE OF SEDIMENTS IN AN UPLAND AREA SUCH THAT THEY DO NOT ENCUMBER OTHER DRAINAGE STRUCTURES AND PROTECTED AREAS. |
| 7. | CONTRACTOR SHALL BE FULLY RESPONSIBLE TO CONTROL CONSTRUCTION SUCH THAT SEDIMENTATION SHALL NOT AFFECT REGULATORY PROTECTED AREAS, WHETHER SUCH SEDIMENTATION IS CAUSED BY WATER, WIND, OR DIRECT DEPOSIT. |
| 8. | CONTRACTOR SHALL PERFORM CONSTRUCTION SEQUENCING SUCH THAT EARTH MATERIALS ARE EXPOSED FOR A MINIMUM OF TIME BEFORE THEY ARE COVERED, SEEDED, OR OTHERWISE STABILIZED TO PREVENT EROSION. |
| 9. | UPON COMPLETION OF CONSTRUCTION AND ESTABLISHMENT OF PERMANENT GROUND COVER, CONTRACTOR SHALL REMOVE AND DISPOSE OF EROSION CONTROL MEASURES AND CLEAN SEDIMENT AND DEBRIS FROM ENTIRE DRAINAGE AND SEWER SYSTEMS. |

| | |
|---|--|
| Existing Conditions Information | |
| BASE PLAN: THE PROPERTY LINES SHOWN WERE DETERMINED BY AN ACTUAL FIELD SURVEY CONDUCTED BY PHELPS ENGINEERING, INC. THE TOPOGRAPHY AND PHYSICAL FEATURES ARE BASED ON AN ACTUAL FIELD SURVEY PERFORMED ON THE GROUND BY PHELPS ENGINEERING INC. ON 9-9-10 | |
| A. DELINEATION OF THE WETLANDS AND PLACEMENT OF THE FLAGS WAS PERFORMED BY: SHELLEY GUSTAFSTON ENVIRONMENTAL, LLC. | |
| B. FLAGS MARKING THE WETLANDS WERE LOCATED BY: PHELPS ENGINEERING, INC. | |
| TOPOGRAPHY: ELEVATIONS ARE BASED ON NAD 88 DATUM. HORIZONTAL POSITIONS ARE BASED ON NAD83 VERMONT STATE PLAN COORDINATE SYSTEM. | |
| 10. GEOTECHNICAL DATA INCLUDING TEST PIT AND BORING LOCATIONS AND ELEVATIONS WERE OBTAINED FROM DENTE ENGINEERING. | |



Vanasse Hangen Brustlin, Inc.

Transportation
Land Development
Environmental Services

7056 U.S. Route 7, P.O. Box 120
North Ferrisburgh, Vermont 05473
802.425.7788 • FAX 802.425.7799

| | | | | | |
|------------------------|----------|-------------------------|-------------|------|--------|
| | | | | | |
| | | | | | |
| | | | | | |
| | | | | | |
| | | | | | |
| | | | | | |
| | | | | | |
| | | | | | |
| | | | | | |
| No. | Revision | | | Date | Appvd. |
| Designed by <i>TTC</i> | | Drawn by <i>ATR</i> | Checked by | | |
| CAD checked by | | | Approved by | | |
| Scale <i>NA</i> | | Date <i>May 2, 2012</i> | | | |
| Project Title | | | | | |

ACTR BUS BARN

Creek Road
Middlebury, Vermont

DESIGN DEVELOPMENT

Not Approved for Construction

Drawing Title

Legend and General Notes

Drawing Number

C-1

Sheet 1 of 8

Project Number 57502.00

57502-LG.DWG

| Sign Summary | | | |
|-------------------|---------------|--------|-------|
| M.U.T.C.D. Number | Specification | | Desc. |
| | Width | Height | |
| R1-1 | 30" | 30" | |
| R5-1 | 30" | 30" | |
| R6-2 | 18" | 24" | |
| R7-8 | 12" | 18" | |
| R7-8P | 12" | 6" | |



Vanasse Hangen Brustlin, Inc.

Transportation
Land Development
Environmental Services

7056 U.S. Route 7, P.O. Box 120
North Ferrisburgh, Vermont 05473
802.425.7788 • FAX 802.425.7799

N



20 0 20 40
SCALE IN FEET

| | | | |
|--|--|--|--|
| | | | |
| | | | |
| | | | |
| | | | |
| | | | |
| | | | |
| | | | |
| | | | |
| | | | |
| | | | |

| | | | |
|----------------|------------|-------------|-------------|
| No. | Revision | Date | Appvd. |
| Designed by | <i>TTC</i> | Drawn by | <i>ATR</i> |
| CAD checked by | | Approved by | |
| Scale | 1"=20' | Date | May 2, 2012 |
| Project Title | | | |

ACTR BUS BARN

Creek Road
Middlebury, Vermont
Issued for

DESIGN DEVELOPMENT

Not Approved for Construction
Drawing Title

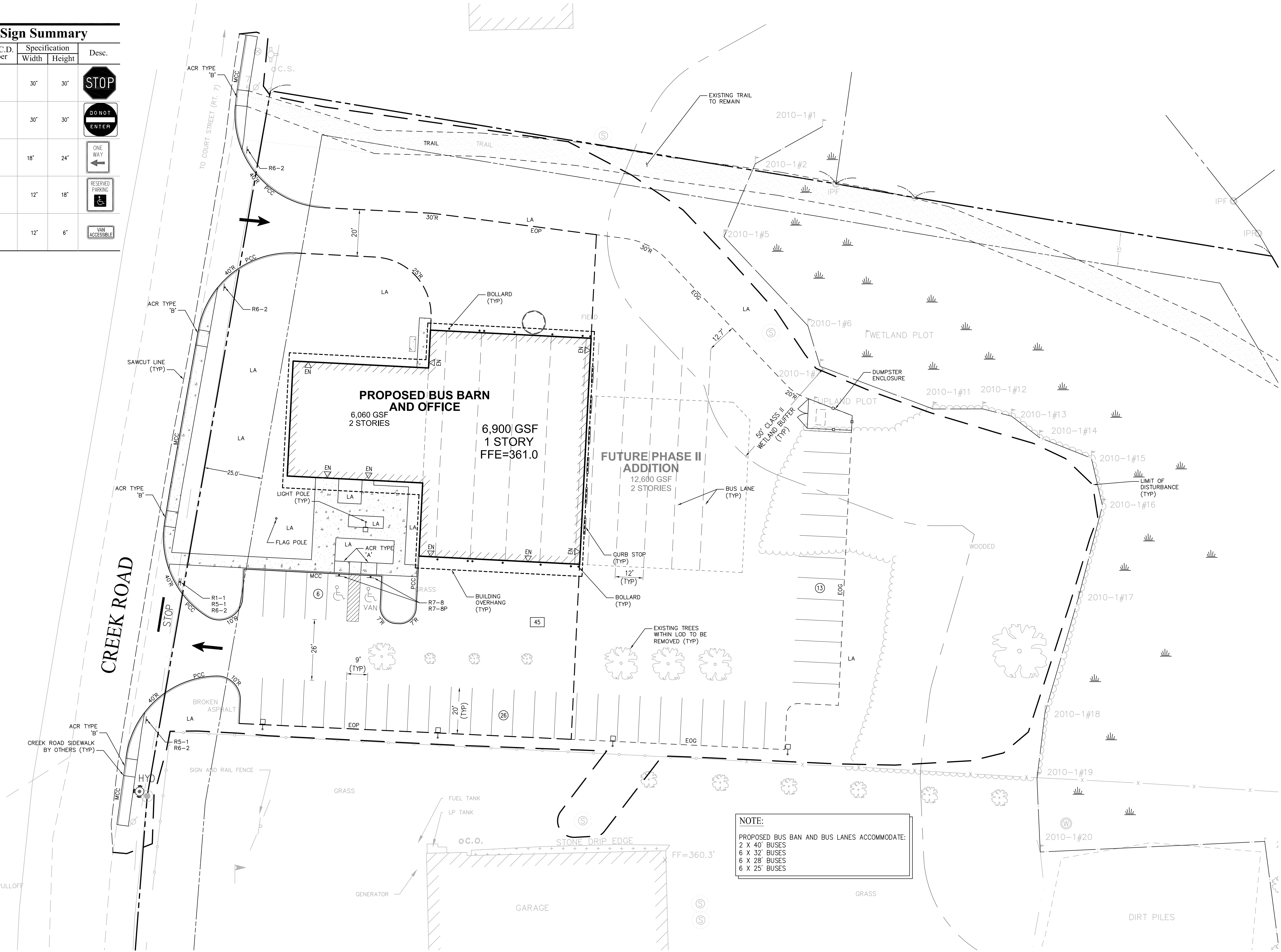
Layout and
Materials Plan

Drawing Number

C-2

Sheet
2 of 8

Project Number
57502.00



NOTE:

CREEK ROAD STREET, CURB, AND
SIDEWALK IMPROVEMENTS BY
OTHERS



Vanasse Hangen Brustlin, Inc.

Transportation
Land Development
Environmental Services

7056 U.S. Route 7, P.O. Box 120
North Ferrisburgh, Vermont 05473
802.425.7788 • FAX 802.425.7799

N



20 0 20 40
SCALE IN FEET

| | | | | | |
|--|--|--|--|--|--|
| | | | | | |
| | | | | | |
| | | | | | |
| | | | | | |
| | | | | | |
| | | | | | |

| | | | |
|----------------|------------|-------------|-------------|
| No. | Revision | Date | Appvd. |
| Designed by | <i>TTC</i> | Drawn by | <i>ATR</i> |
| CAD checked by | | Approved by | |
| Scale | 1"=20' | Date | May 2, 2012 |

ACTR BUS BARN

Creek Road
Middlebury, Vermont
Issued for

DESIGN DEVELOPMENT

Not Approved for Construction
Drawing Title

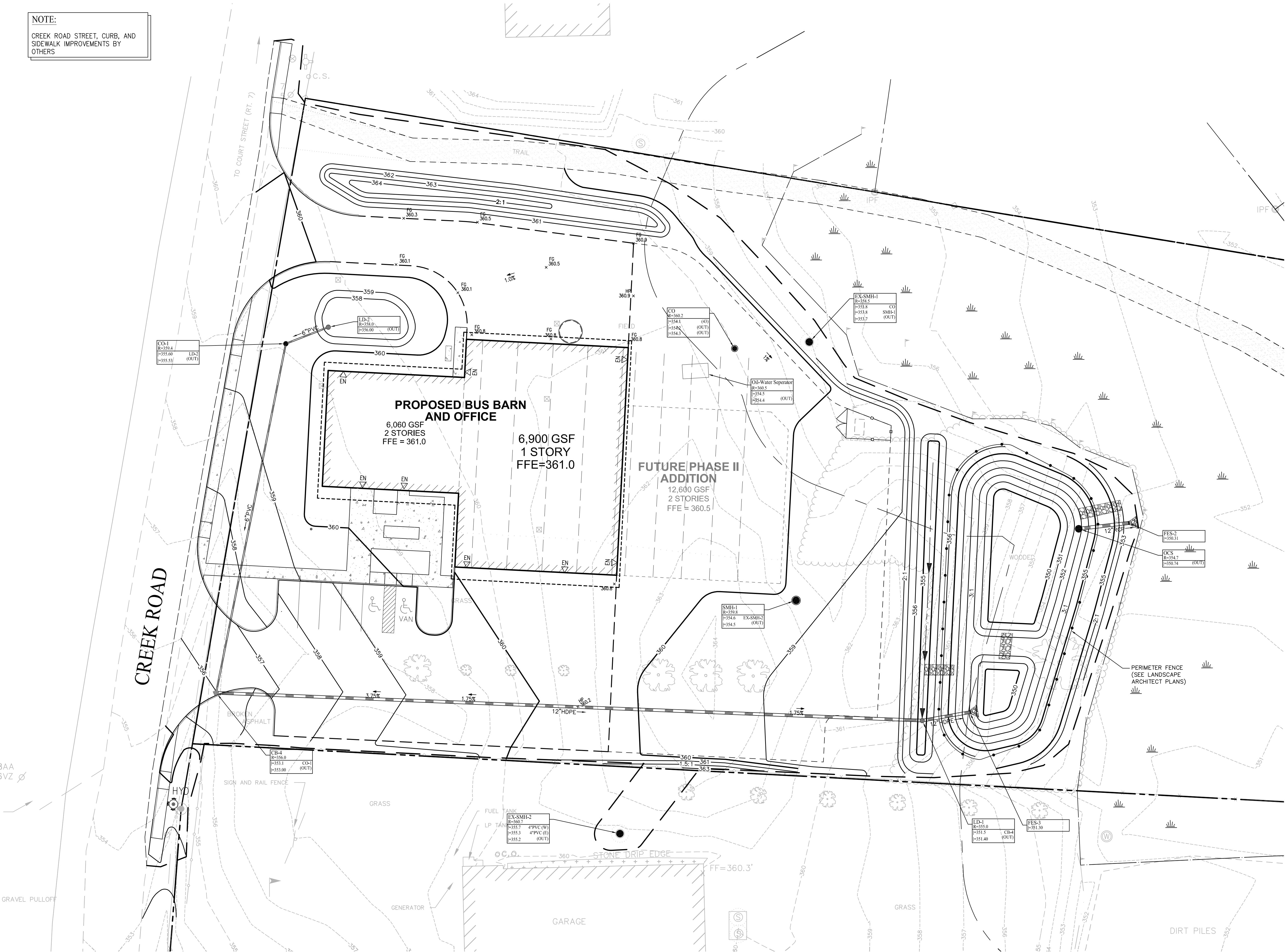
Grading Plan

Drawing Number

C-3

Sheet 3 of 8

Project Number
57502.00





Vanasse Hangen Brustlin, Inc.

Transportation
Land Development
Environmental Services

7056 U.S. Route 7, P.O. Box 120
North Ferrisburgh, Vermont 05473
802.425.7788 • FAX 802.425.7799

N



20 0 20 40
SCALE IN FEET

| | | | | | |
|--|--|--|--|--|--|
| | | | | | |
| | | | | | |
| | | | | | |
| | | | | | |
| | | | | | |
| | | | | | |
| | | | | | |
| | | | | | |
| | | | | | |
| | | | | | |

| | | | | |
|------------------------|----------|---------------------|------------|--------|
| No. | Revision | | Date | Appvd. |
| Designed by <i>TTC</i> | | Drawn by <i>ATR</i> | Checked by | |
| CAD checked by | | Approved by | | |
| Scale 1"=20' | | Date May 2, 2012 | | |

ACTR BUS BARN

Creek Road
Middlebury, Vermont

Issued for

DESIGN DEVELOPMENT

Not Approved for Construction

Drawing Title

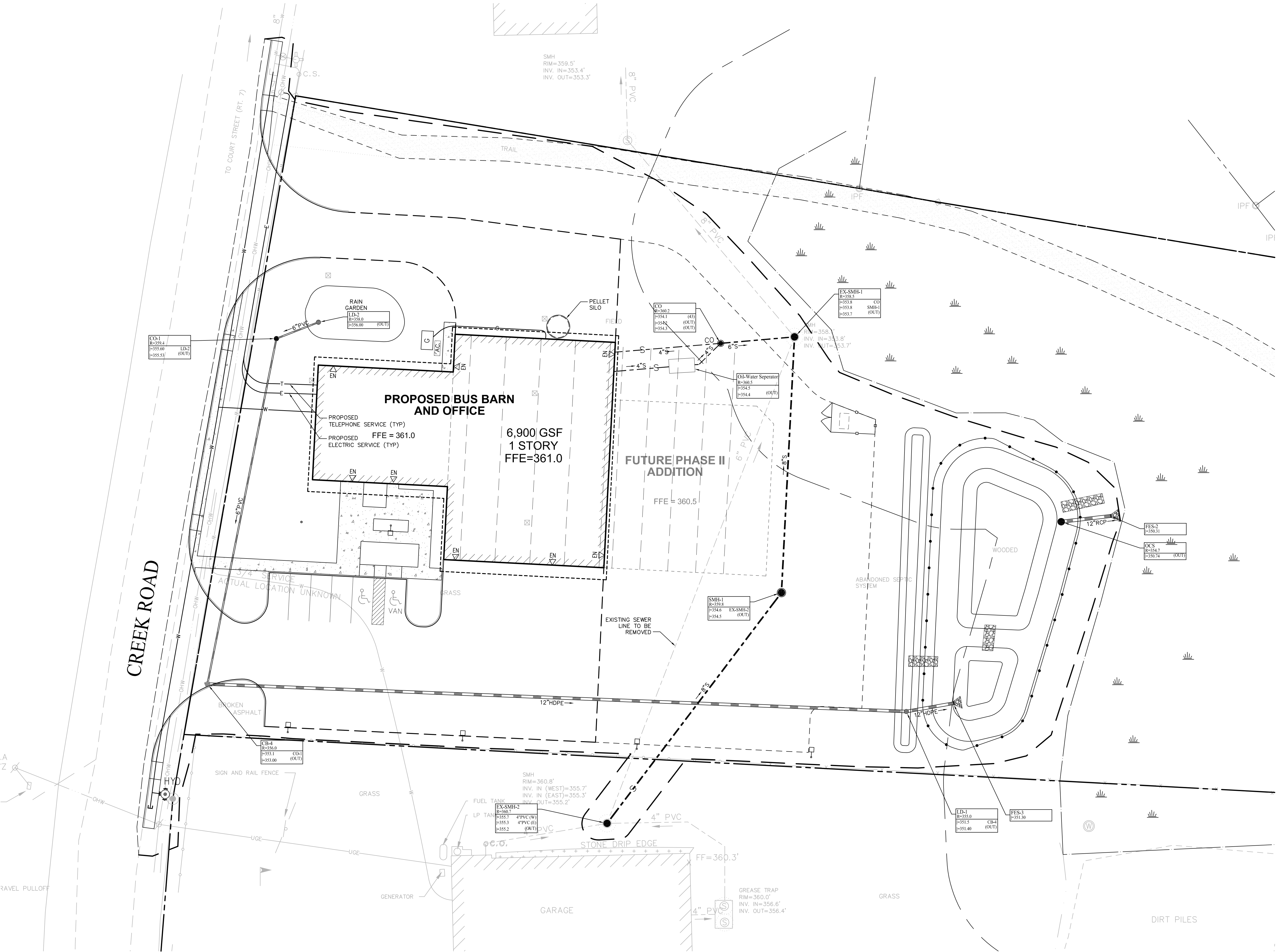
Utility Plan

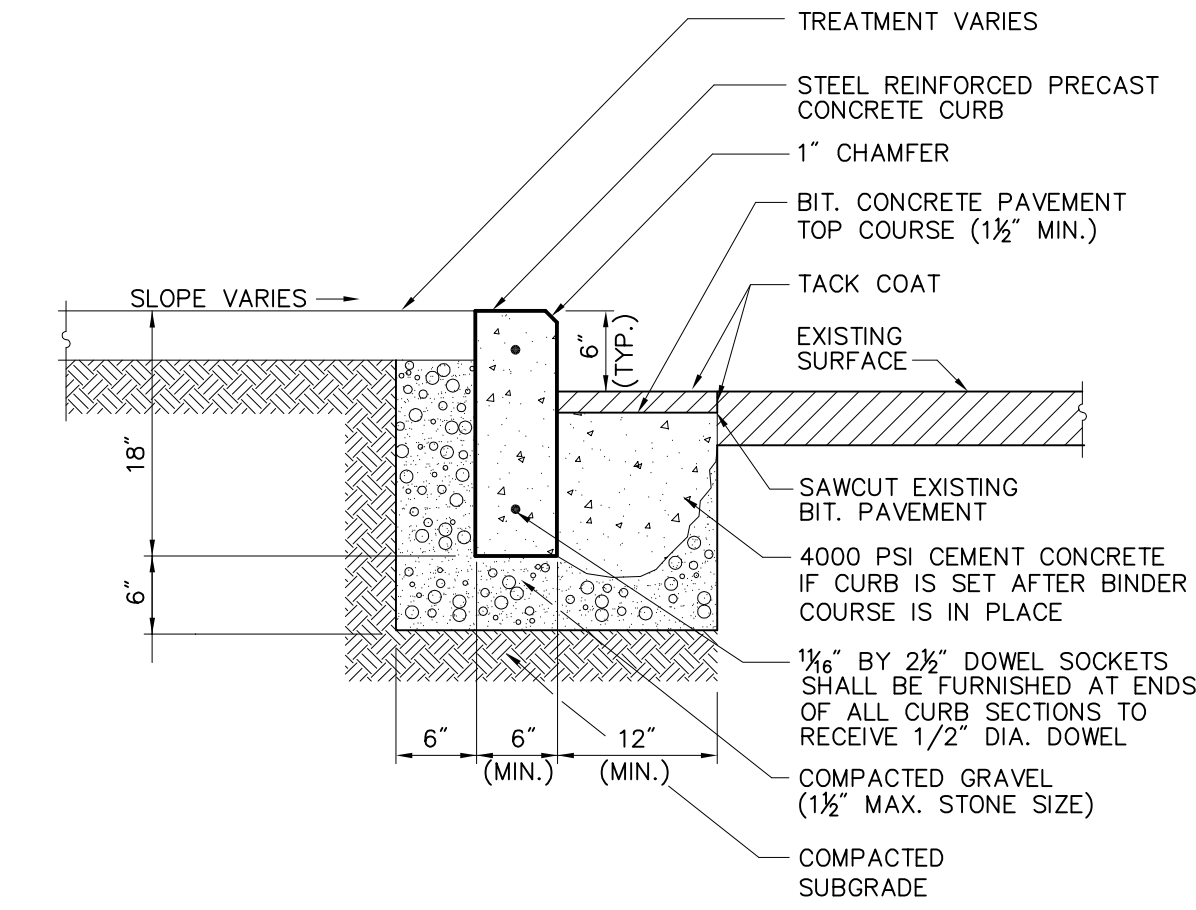
Drawing Number

C-4

Sheet 4 of 8

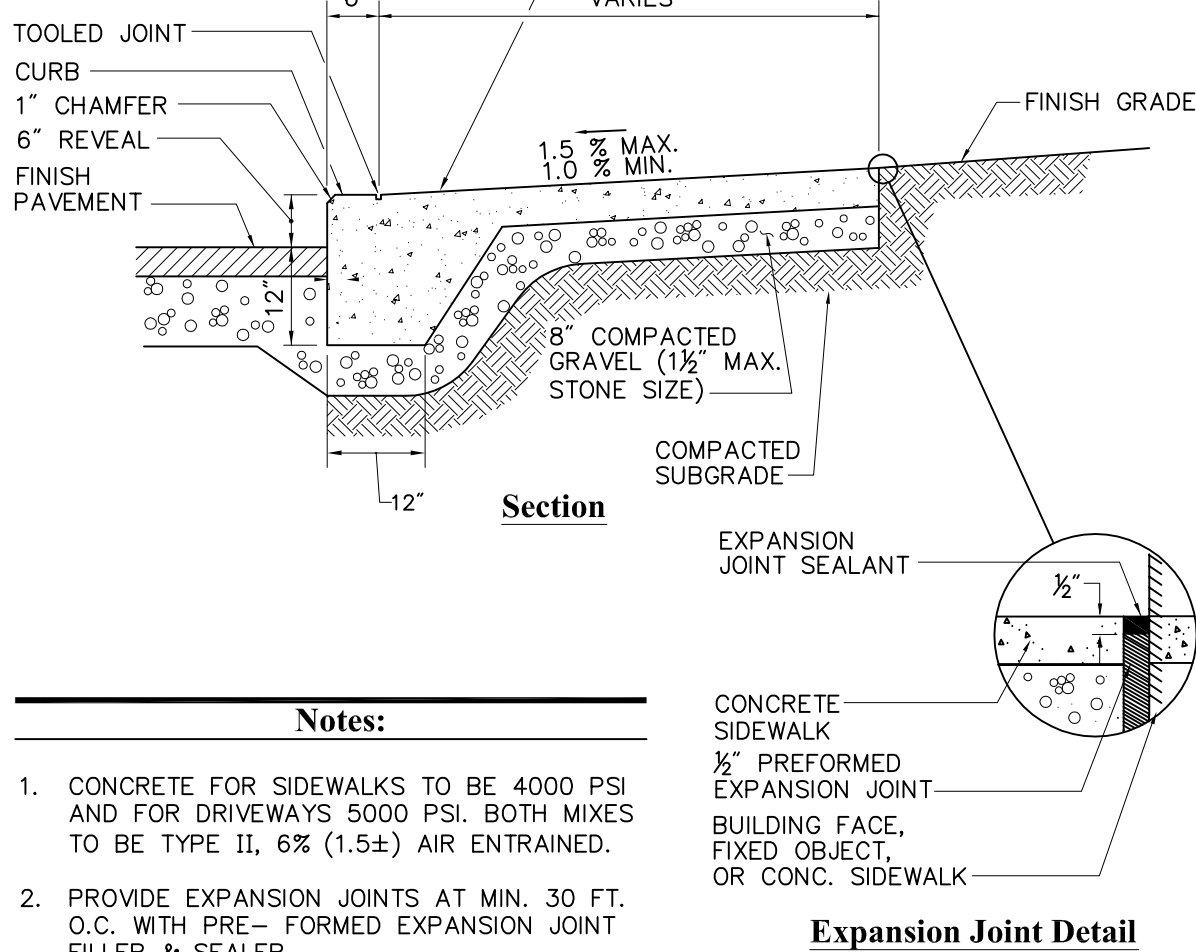
Project Number
57502.00





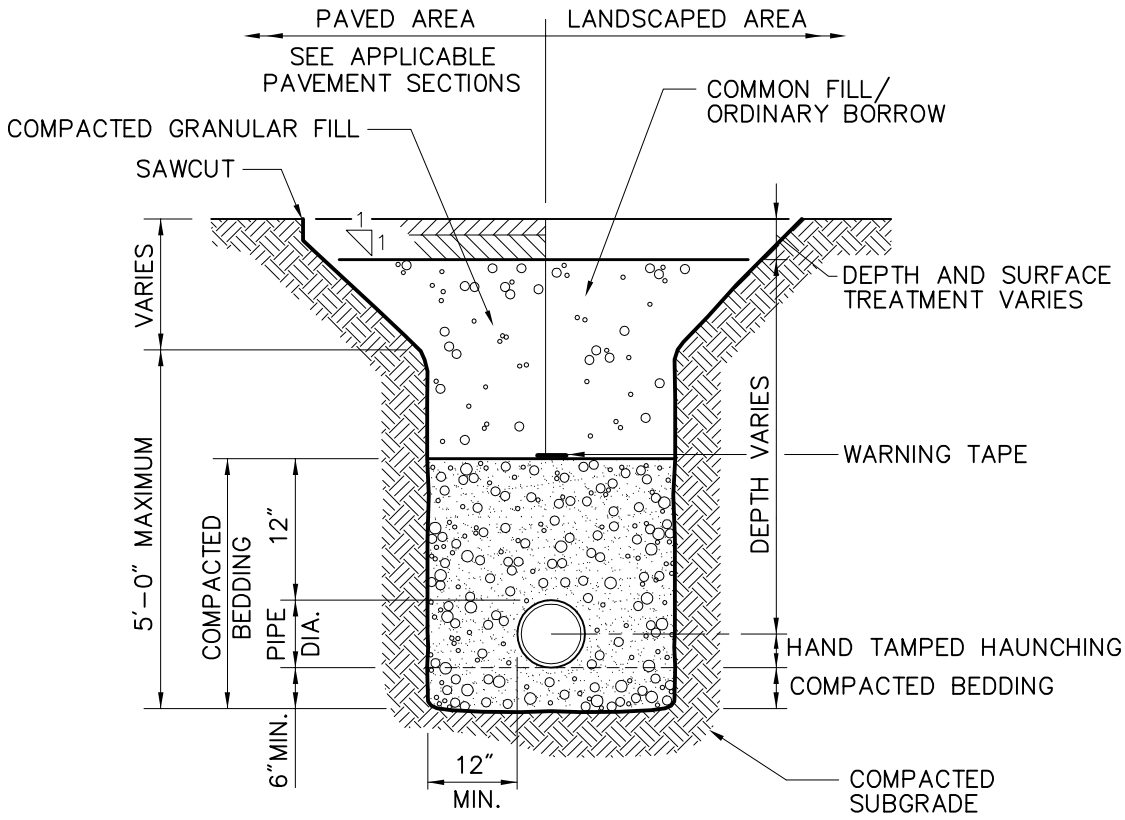
Precast Concrete Curb (PCC) Set In Existing Pavement

N.T.S. Source: VHB LD_405



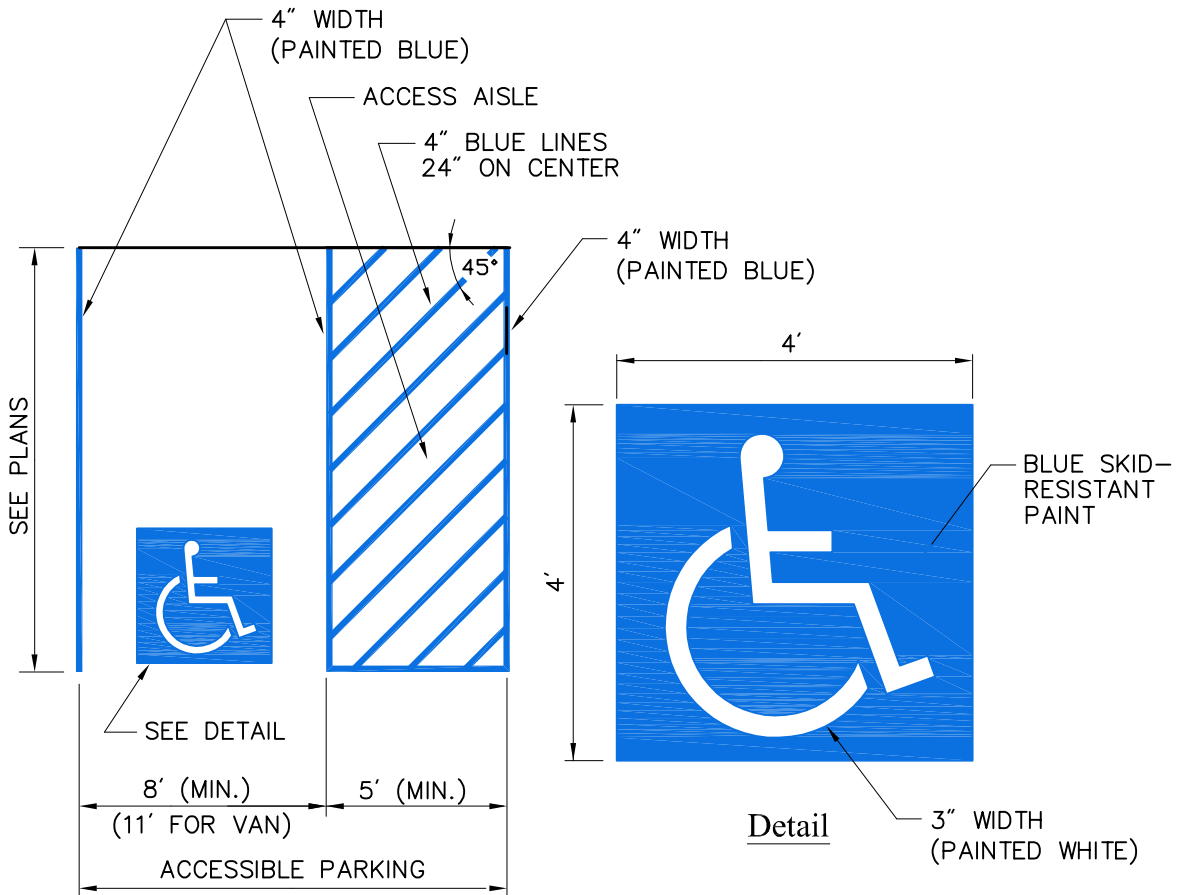
Monolithic Concrete Curb (MCC) & Sidewalk

N.T.S. Source: VHB LD_421



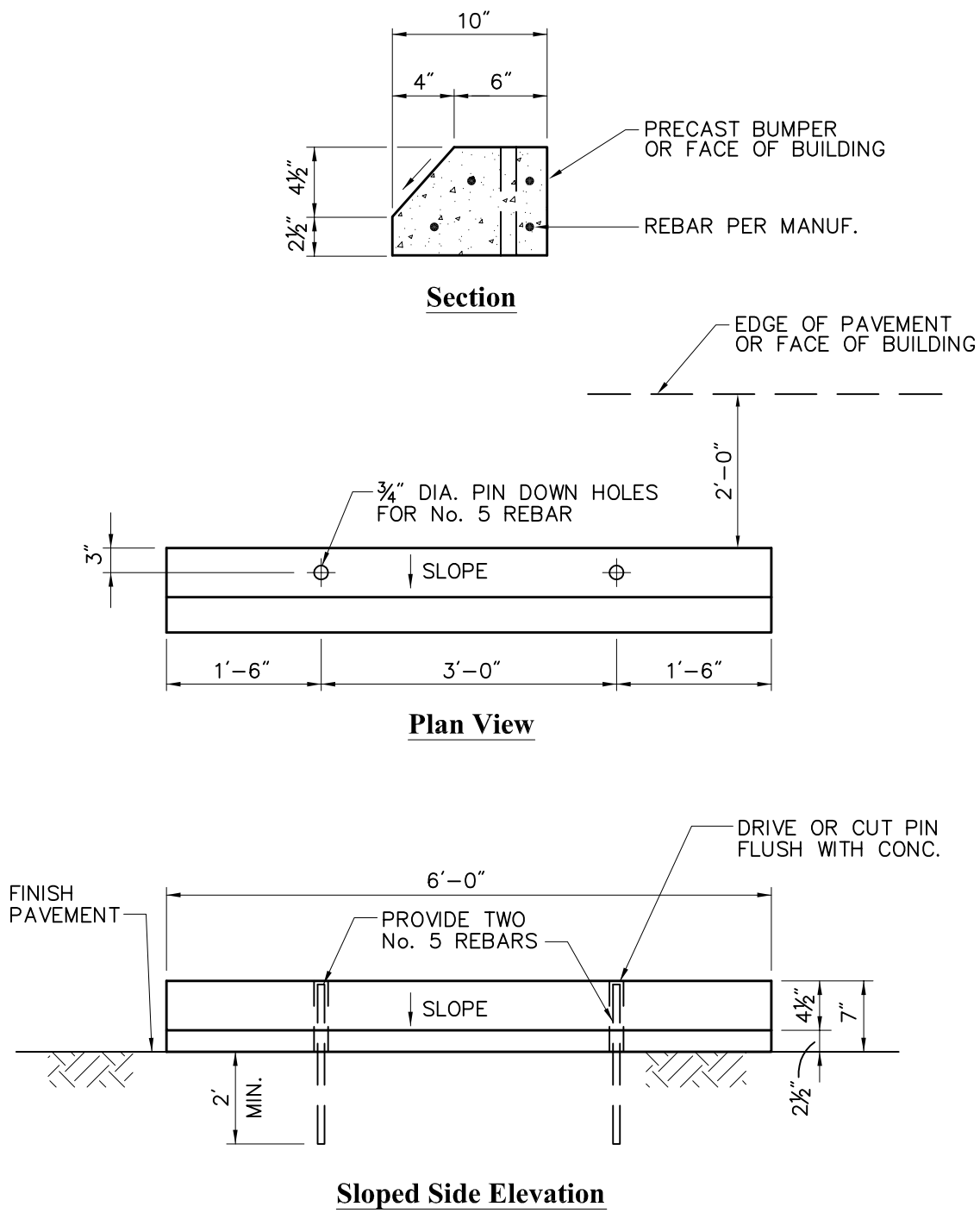
Utility Trench

N.T.S. Source: VHB LD_300



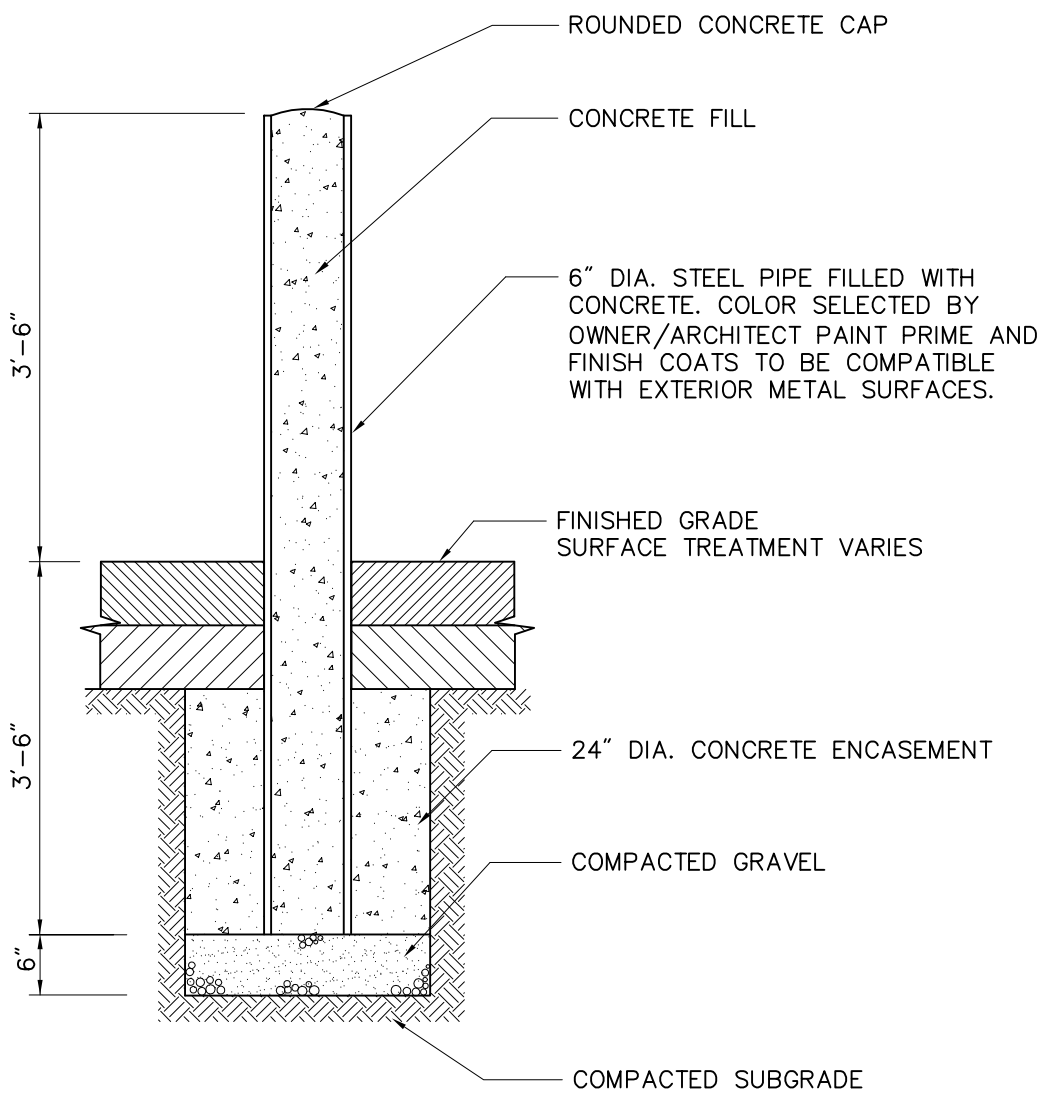
Accessible Parking Space

N.T.S. Source: VHB LD_552



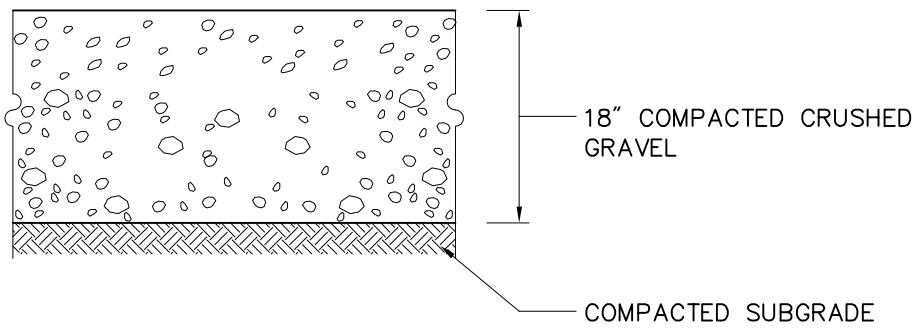
Concrete Bumper

| | | |
|--------|-------------|--------|
| N.T.S. | Source: VHB | LD_417 |
|--------|-------------|--------|



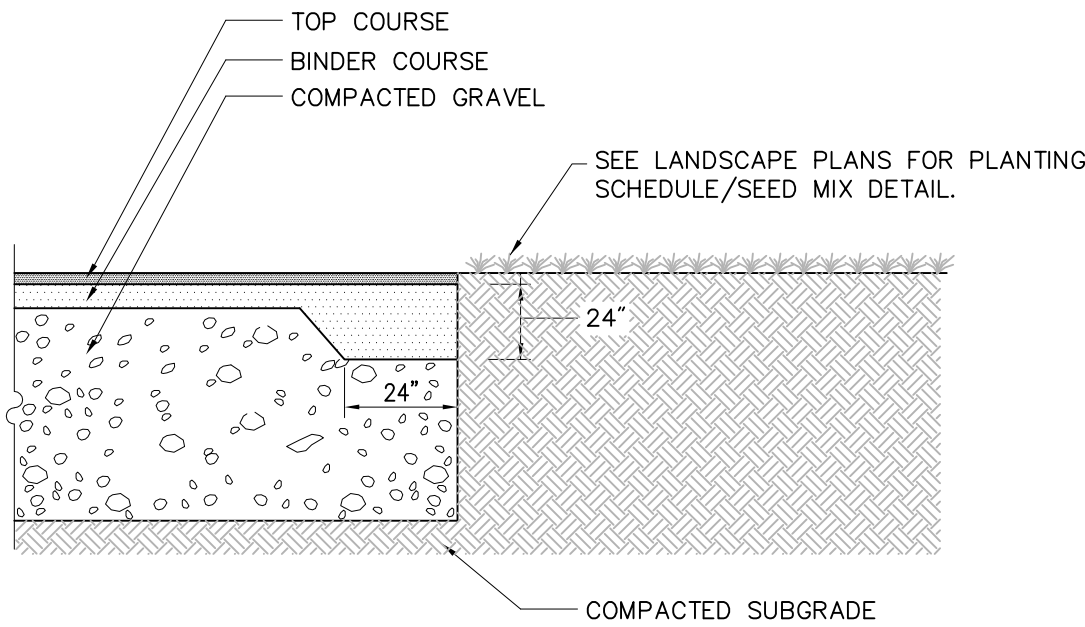
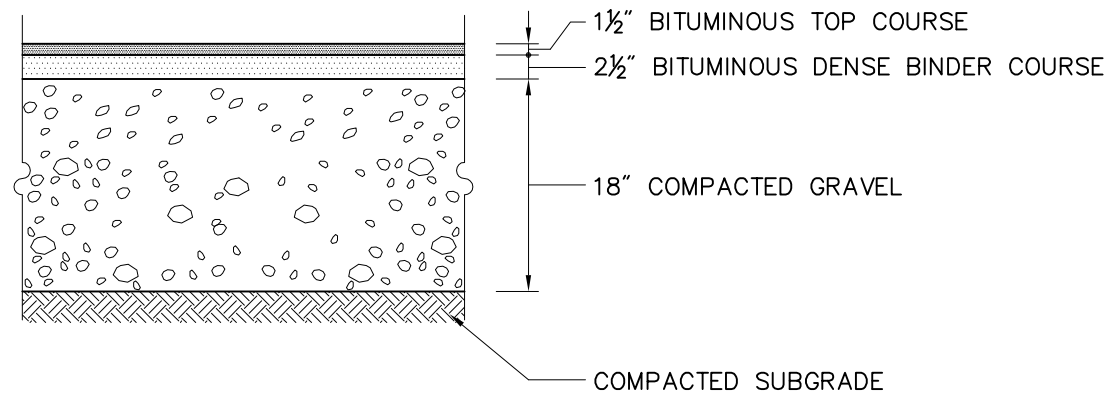
Bollard

| | | |
|--------|-------------|--------|
| N.T.S. | Source: VHB | LD_700 |
|--------|-------------|--------|



Gravel Access Drive

| | | |
|--------|-------------|--------|
| N.T.S. | Source: VHB | LD_430 |
|--------|-------------|--------|



Bituminous Concrete Pavement Details

| | | |
|--------|-------------|--------|
| N.T.S. | Source: VHB | LD_430 |
|--------|-------------|--------|



Vanasse Hangen Brustlin, Inc.

Transportation
Land Development
Environmental Services

7056 U.S. Route 7, P.O. Box 120
North Ferrisburgh, Vermont 05473
802.425.7788 • FAX 802.425.7799

| | | | | |
|----------------|----------|-------------|-------------|--|
| | | | | |
| | | | | |
| | | | | |
| | | | | |
| | | | | |
| | | | | |
| | | | | |
| | | | | |
| No. | Revision | Date | Approved by | |
| Designed by | Drawn by | Checked by | | |
| CAD checked by | | Approved by | | |
| Scale | | Date | May 2, 2012 | |

ACTR BUS BARN

Creek Road
Middlebury, Vermont
Issued for

DESIGN DEVELOPMENT

Not Approved for Construction

Drawing Title

Details

Drawing Number

C-5

Sheet 5 of 8

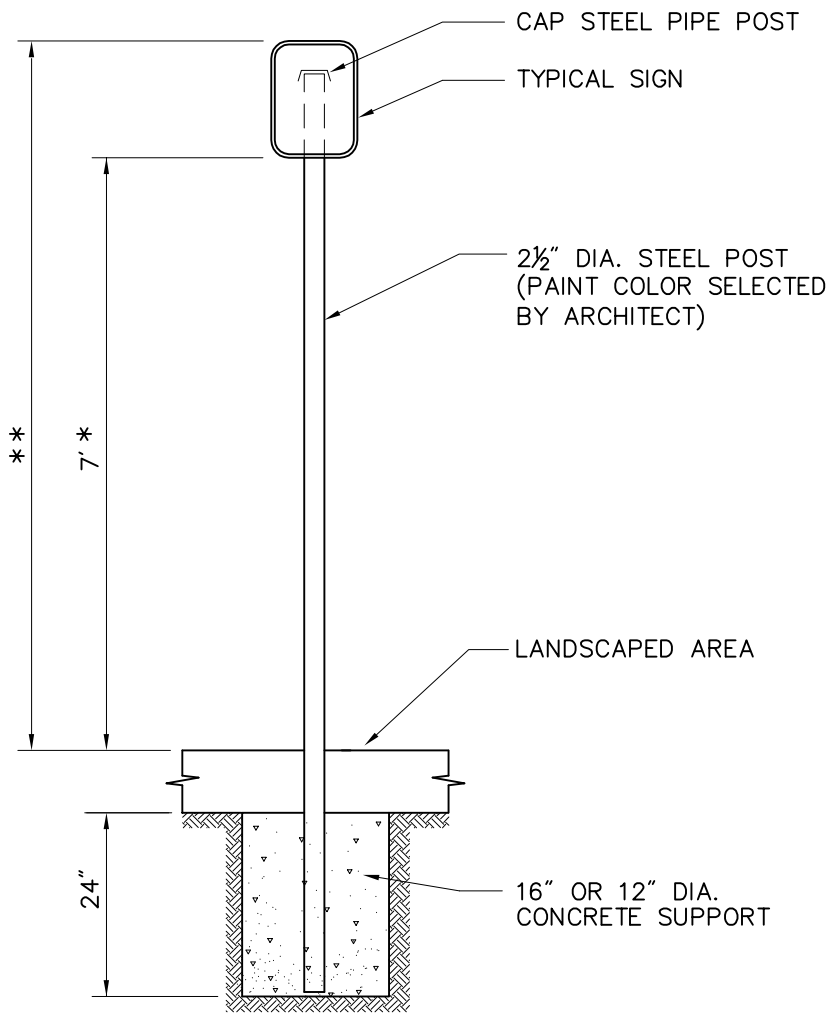
Project Number
57502.00



Vanasse Hangen Brustlin, Inc.

Transportation
Land Development
Environmental Services

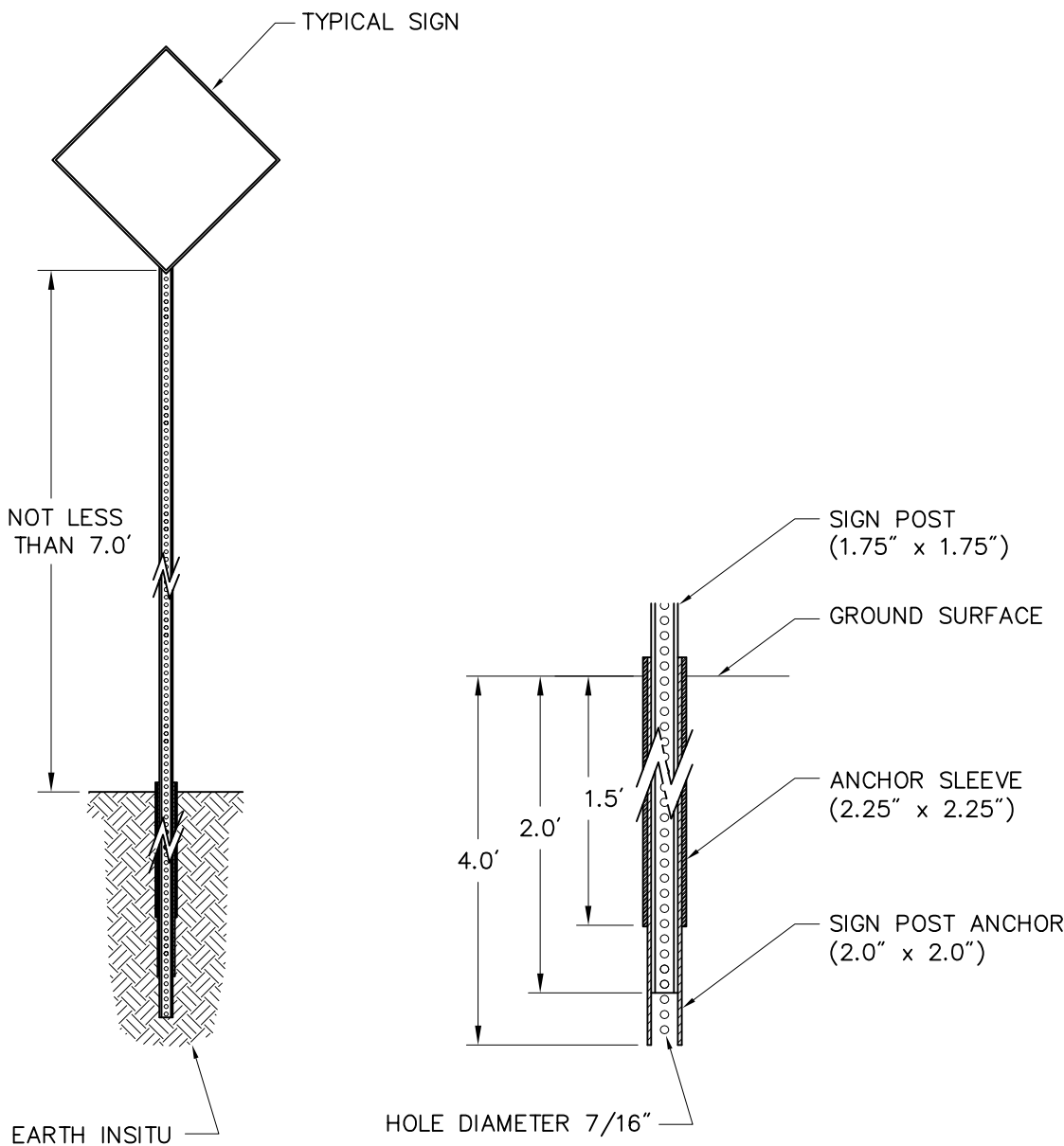
7056 U.S. Route 7, P.O. Box 120
North Ferrisburgh, Vermont 05473
802.425.7788 • FAX 802.425.7799



* THIS DIMENSION SHALL BE A MINIMUM OF 5' FOR ACCESSIBLE SIGNAGE.
** THIS DIMENSION SHALL BE A MINIMUM OF 5' AND A MAXIMUM OF 8' FOR ACCESSIBLE SIGNAGE IN THE COMMONWEALTH OF MASSACHUSETTS.

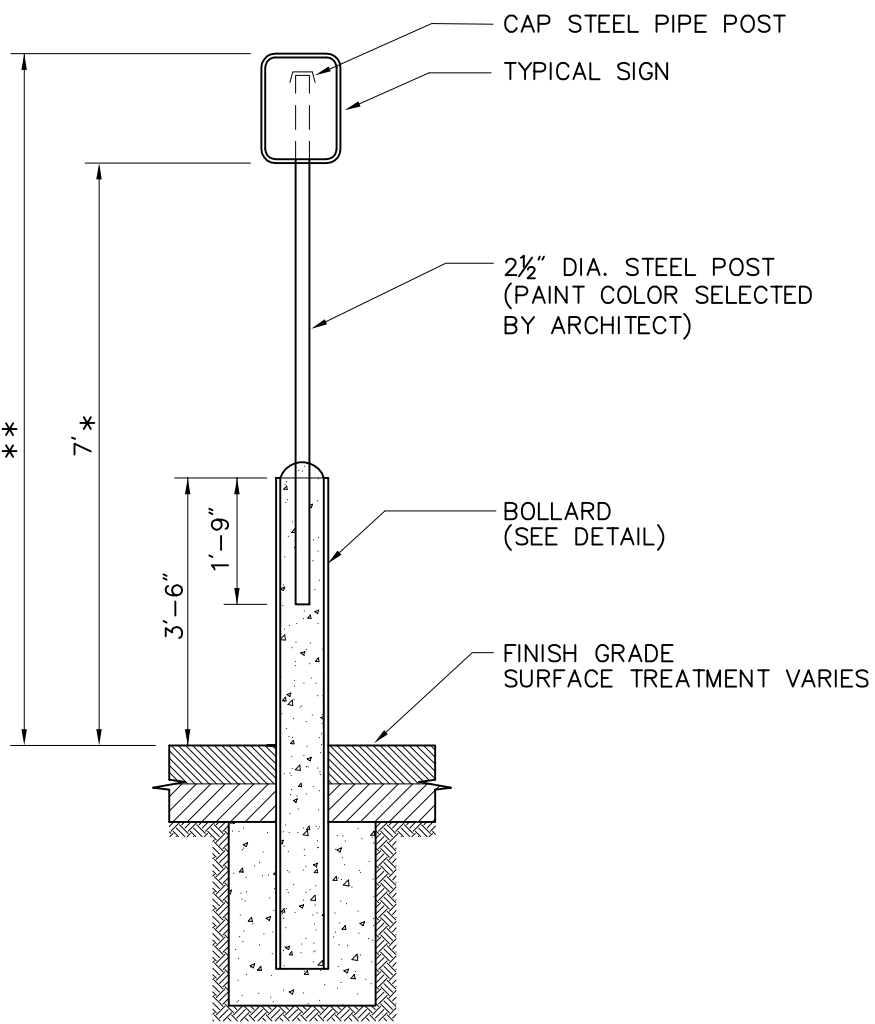
Sign Post - Type 'A'

N.T.S. Source: VHB 1/12 LD_701



Sign Post - Type 'B'

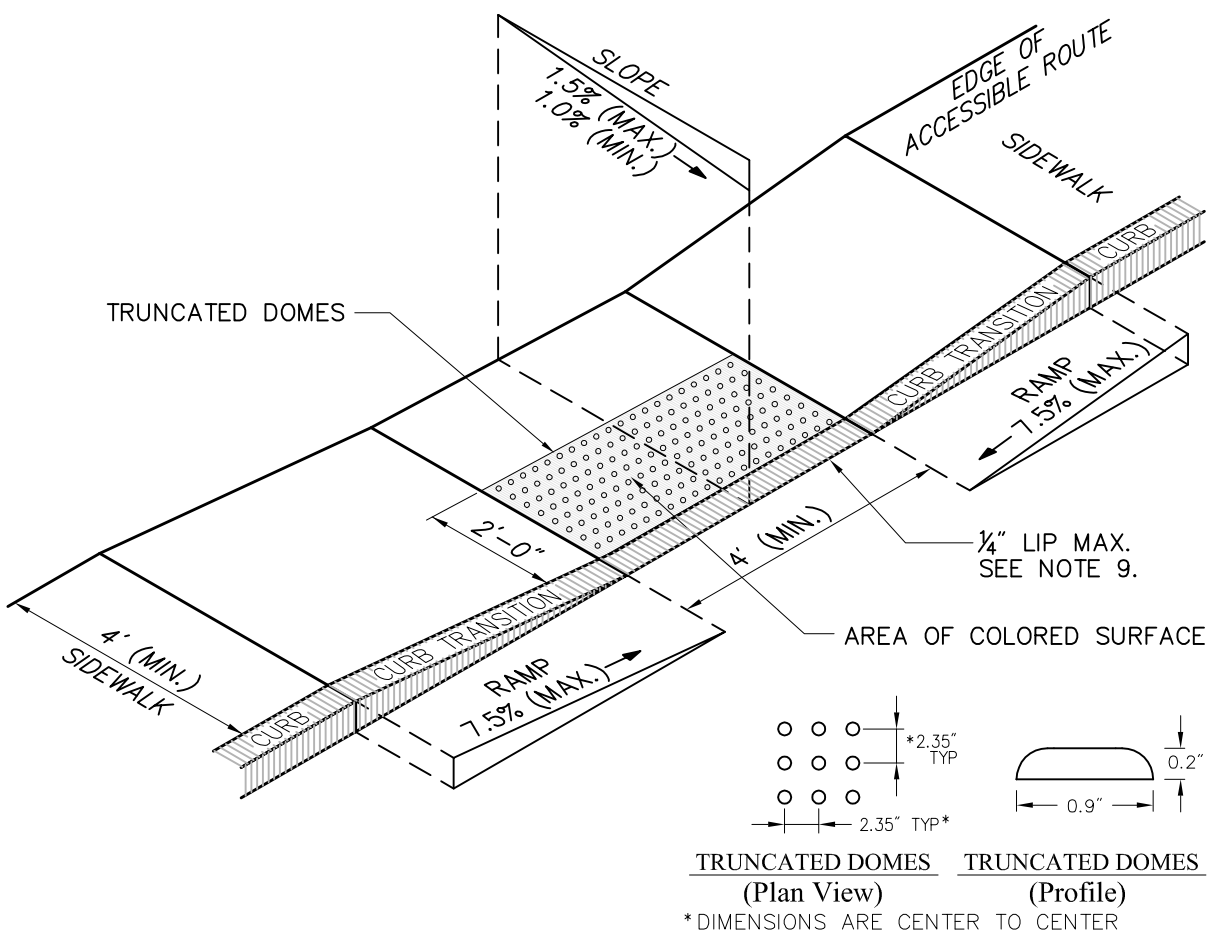
N.T.S. Source: VHB 6/08 LD_702



* THIS DIMENSION SHALL BE A MINIMUM OF 5' FOR ACCESSIBLE SIGNAGE.
** THIS DIMENSION SHALL BE A MINIMUM OF 5' AND A MAXIMUM OF 8' FOR ACCESSIBLE SIGNAGE IN THE COMMONWEALTH OF MASSACHUSETTS.

Bollard Mounted Sign

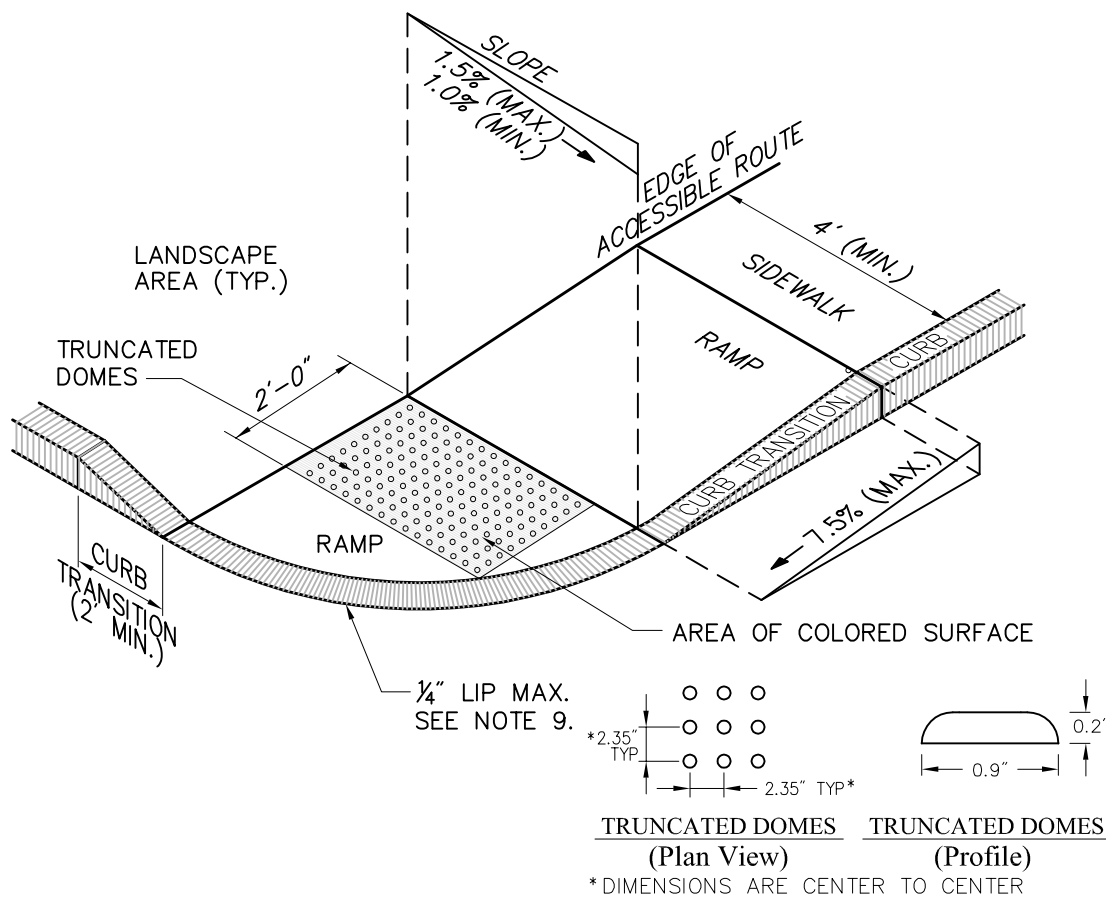
N.T.S. Source: VHB 1/12 LD_703



- Notes:**
1. THE MAXIMUM ALLOWABLE SIDEWALK AND CURB RAMP CROSS SLOPES SHALL BE 1.5 (1% MIN.).
 2. THE MAXIMUM ALLOWABLE SLOPE OF ACCESSIBLE ROUTE EXCLUDING CURB RAMPS SHALL BE 5%.
 3. THE MAXIMUM ALLOWABLE SLOPE OF ACCESSIBLE ROUTE AT CURB RAMPS SHALL BE 7.5%.
 4. A MINIMUM OF 3 FEET CLEAR SHALL BE MAINTAINED AT ANY PERMANENT OBSTACLE IN ACCESSIBLE ROUTE (I.E., HYDRANTS, UTILITY POLES, TREE WELLS, SIGNS, ETC.).
 5. CURB TREATMENT VARIES, SEE PLANS FOR CURB TYPE.
 6. RAMP, CURB, AND ADJACENT PAVEMENTS SHALL BE GRADED TO PREVENT PONDING.
 7. SEE TYPICAL SIDEWALK SECTION FOR RAMP CONSTRUCTION.
 8. WHERE ACCESSIBLE ROUTES ARE LESS THAN 5' IN WIDTH (EXCLUDING CURBING) A 5' x 5' PASSING AREA SHALL BE PROVIDED AT INTERVALS NOT TO EXCEED 200 FEET.
 9. ELIMINATE CURBING AT RAMP (OTHER THAN VERTICAL CURBING, WHICH SHALL BE SET FLUSH) WHERE IT ABUTS ROADWAY.
 10. DETECTABLE WARNINGS SHALL CONTRAST VISUALLY WITH ADJOINING SURFACES.
 11. DETECTABLE WARNINGS SHALL BE INSTALLED PERPENDICULAR TO ACCESSIBLE ROUTE.

Accessible Curb Ramp (ACR) Type 'A-D'

N.T.S. Source: VHB 3/11 LD_500



- Notes:**
1. THE MAXIMUM ALLOWABLE SIDEWALK AND CURB RAMP CROSS SLOPES SHALL BE 1.5 (1% MIN.).
 2. THE MAXIMUM ALLOWABLE SLOPE OF ACCESSIBLE ROUTE EXCLUDING CURB RAMPS SHALL BE 5%.
 3. THE MAXIMUM ALLOWABLE SLOPE OF ACCESSIBLE ROUTE AT CURB RAMPS SHALL BE 7.5%.
 4. A MINIMUM OF 3 FEET CLEAR SHALL BE MAINTAINED AT ANY PERMANENT OBSTACLE IN ACCESSIBLE ROUTE (I.E., HYDRANTS, UTILITY POLES, TREE WELLS, SIGNS, ETC.).
 5. CURB TREATMENT VARIES, SEE PLANS FOR CURB TYPE.
 6. RAMP, CURB AND ADJACENT PAVEMENTS SHALL BE GRADED TO PREVENT PONDING.
 7. SEE TYPICAL SIDEWALK SECTION FOR RAMP CONSTRUCTION.
 8. WHERE ACCESSIBLE ROUTES ARE LESS THAN 5' IN WIDTH (EXCLUDING CURBING) A 5' x 5' PASSING AREA SHALL BE PROVIDED AT INTERVALS NOT TO EXCEED 200 FEET.
 9. ELIMINATE CURBING AT RAMP WHERE IT ABUTS ROADWAY, EXCEPT WHERE VERTICAL CURBING IS INDICATED ON THE DRAWINGS TO BE INSTALLED AND SET FLUSH.
 10. DETECTABLE WARNINGS SHALL CONTRAST VISUALLY WITH ADJOINING SURFACES.
 11. DETECTABLE WARNINGS SHALL BE INSTALLED PERPENDICULAR TO THE ACCESSIBLE ROUTE.
 12. CONTRACTOR TO SUBMIT R.F.I. FOR THIS TYPE OF ACCESSIBLE CURB RAMP FOR APEX ROADWAY CROSSINGS.

Accessible Curb Ramp (ACR) - Type 'B-D'

N.T.S. Source: VHB 11/10 LD_501

| | | | |
|--|--|--|--|
| | | | |
| | | | |
| | | | |
| | | | |
| | | | |
| | | | |
| | | | |
| | | | |
| | | | |
| | | | |

| | | | |
|----------------|-------------|-------------|--------|
| No. | Revision | Date | Appvd. |
| Designed by | Drawn by | Checked by | |
| CAD checked by | Approved by | | |
| Scale | Date | May 2, 2012 | |
| Project Title | | | |

ACTR BUS BARN

Creek Road
Middlebury, Vermont

Issued for

DESIGN DEVELOPMENT

Not Approved for Construction

Drawing Title

Details

| | |
|----------------|----------------|
| | Drawing Number |
| C-8 | |
| Sheet | of |
| 8 | 8 |
| Project Number | |
| 57502.00 | |